

Typical usage is for **PASSENGER'S** side seating positions. For some vehicle configurations the belt can be used in other vehicle positions

Fitting Instructions for Inertia Lap/Sash Seat Belts

Description: I600033 general purpose inertia lap/sash with adjustable webbing buckle or fixed webbing buckle, front or rear application, 60°-90° RH ELR, in-pillar mount.

Do not adjust the slider until you have bolted the seatbelt in place. The ELR may lock up if too much webbing winds on the spool.



Where possible have the seat belt installed by a competent mechanic at an appropriate fitting station.

Do not use in front seating positions on air bag equipped vehicles.

- Assemble the buckle half as shown in figure 2b. Adjust the webbing length so that the buckle fits in the seat at maximum forward adjustment.
- The buckle must be located at or below the wearer's hips.
- Assemble the tongue half as shown in figure 2a. Attach the Sash Guide Assembly first (step 1) followed by the anchor plate and spacer (step 2) and finally the ELR and bolt (step 3).
- Tighten bolts securely to a torque of 35-40Nm.

Warning for Installer

- Read these whole of the instructions carefully and consult Hemco in the event of doubt as to the method of installation.
- Do not mount assemblies to unsound metal, or to wooden or plastic structures, or to seats (unless the vehicle manufacturer has provided seat belt anchors on the seat).
- Ensure that the webbing does not contact sharp corners or edges which may cause cutting or abrasion.
- Do not make any alterations or modifications to the seat belt assembly.
- Do not attach seat belt fittings to any child restraint anchorages provided in the vehicle.

Fitting Instructions For Cars Without Anchorage Points

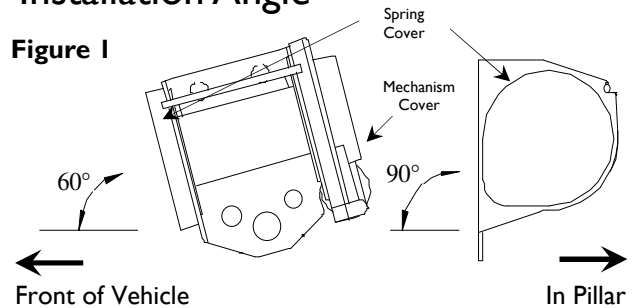
- Do not drill additional anchorage points if there are existing in-built anchorages.
- Cut carpets, etc. to allow at least 1.5mm clearance on all sides.
- Ensure floor anchorage points are no less than 380mm apart.
- Drill holes where they are free from obstructions on the underside of the vehicle.
- Use a plate to reinforce the anchor point. Reinforcement plates are available from Hemco as an option.
- The shoulder anchor point should be located at or above shoulder height. When this is not practicable, the maximum recommended downward slope is 15°. Barrel bolts for fitment through the pillar are available from Hemco as an option.

Parts Listing

Inertia Lap/Sash Tongue half by 1
Adjustable or Fixed Web Buckle by 1
7/16" UNF x 40mm bolts by 2
7/16" UNF x 30mm bolts by 1
Step Spacer by 1
Wave Washer by 1
Silver Step Spacer by 1
Flat Washer by 1
Spring washer by 3

Installation Angle

Figure 1



Install Emergency Locking Retractor (ELR) within 3° of design angle for optimum performance and comfort.

Figure 2a

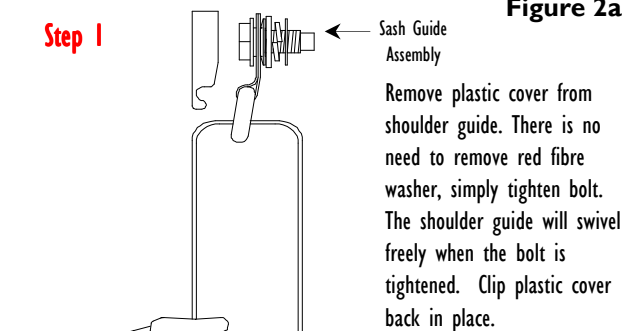


Figure 2b

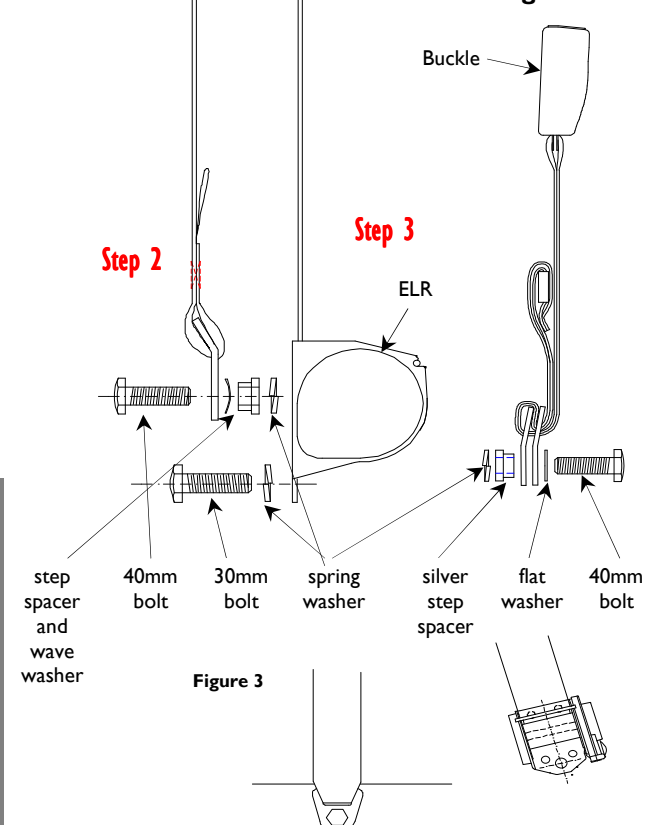


Figure 3

1600033 General Purpose Inertia Lap/Sash Seat Belt 60°-90° RH In-Pillar

INSTRUCTIONS FOR USE OF SEAT BELTS

1600033 General Purpose Inertia Lap/Sash Belt 60°-90° RH In-Pillar

Installers of seat belts are specifically requested to leave these instructions in the vehicle so that the owner may read them.

WARNING

FOR FULL BENEFIT FROM THIS SEAT BELT:-

- IT MUST BE FIRMLY ADJUSTED.
- IT MUST NOT BE TWISTED.
- THE LAP SECTION MUST BE WORN ACROSS THE HIPS.
- THE BUCKLE MUST BE LOCATED AT OR BELOW THE WEARER'S HIP
- EACH SEAT BELT MUST ONLY RESTRAIN ONE OCCUPANT.
- DO NOT ALLOW SEAT BELTS TO CONTACT CHEMICALS
- CLEAN WITH A DAMP CLOTH
- REPLACE THE SEAT BELT WHEN IT HAS BEEN USED IN A SEVERE ACCIDENT OR SHOWS SIGNS OF SEVERE FRAYING OR HAVING BEEN CUT; OR IF IT COMES INTO CONTACT WITH CHEMICALS; OR WHEN, WITH A BELT FITTED WITH A VISUAL OVERLOAD INDICATOR, IT INDICATES THE UNSUITABILITY OF THE BELT FOR FURTHER USE; OR WHEN A SEAT BELT IS EQUIPPED WITH A PRE-LOADING DEVICE, WHEN THE LATTER HAS BEEN ACTIVATED.
- NO MODIFICATIONS OR ADDITIONS SHOULD BE MADE BY THE USER WHICH WILL EITHER PREVENT THE SEAT BELT ADJUSTMENT DEVICES FROM OPERATING TO REMOVE SLACK, OR PREVENT THE SEAT BELT ASSEMBLY BEING ADJUSTED TO REMOVE SLACK.

General Information

Seat belts are designed to bear upon the bony structure of the body, and should be worn low across the front of the pelvis, chest and shoulders as applicable. Wearing of the lap/sash section of the belt across the abdominal area must be avoided.

The emergency locking retractor (ELR) will automatically retract the webbing once the lap/sash and buckle half have disengaged. This type of seat belt allows freedom of movement to the occupant but will automatically lock during a sudden impact, or heavy braking, or a change of direction of the vehicle. To test the locking mechanism of the ELR a sharp tug on the webbing will lock the belt or a firm application on the brakes when the vehicle is in motion.

Care should be taken to avoid contamination of the webbing with polishes, oils and chemicals and particularly battery acid. Use mild soap and water to safely clean the belts.

How To Use Your Seat Belt Correctly

To fasten the seat belt hold the buckle in one hand and hold the sash strap by the tongue in the other then pull it over the hip and across the chest and shoulders and insert the tongue into the red buckle mouth until a click indicates complete engagement.

To release the belt, depress the red button, the tongue will then automatically eject from the buckle. For proper protection the seat belt must be worn comfortably tight when sitting in the normal position.

Figure 4



Push the tongue into the buckle until you hear a click.